

Chapter 3

Educational Administration and Planning

The present educational administrative system in *Thailand* is parallel to all other sectors of public administration characterized by the three-level structure : the central or national level, provincial level, and local level. The administrative and planning system of education including educational personnel administration thus follows this structure as presented below.

3.1 Administrative and Planning Structure of Education

The responsibility for educational management in *Thailand* is under the mandate of four main ministries : *Office of the Prime Minister, Ministry of Education (MOE), Ministry of University Affairs (MUA)* and *Ministry of Interior (MOI)*. In addition, other ministries also take charge of the management of education in specialized fields or for specific purposes. Their responsibilities and functions can be classified as follows :

A. Administration and Planning at the Central or National Level

Educational administration and planning at the central or national level can be divided into two sub-levels: national policy and planning level and ministerial or central level.

● National policy and planning level

The government organizations concerned with educational policy and planning are *Office of the National Economic and Social Development Board (ONESDB)* , *Office of the National Education Commission (ONEC)*, and *Budget Bureau*. They are all under the *Office of the Prime Minister*, a ministerial organization.

Box 3.1 : Government Organizations Responsible for Educational Policy and Planning

<p>The Office of the National Economic and Social Development Board (ONESDB) takes the responsibility of formulating the national economic and social development plan, appraising ministerial and departmental development plans and projects, as well as monitoring, evaluating and giving recommendations on the annual budget of governmental offices. In other words, the ONESDB oversees the overall economic and social development of which education is a sector.</p>

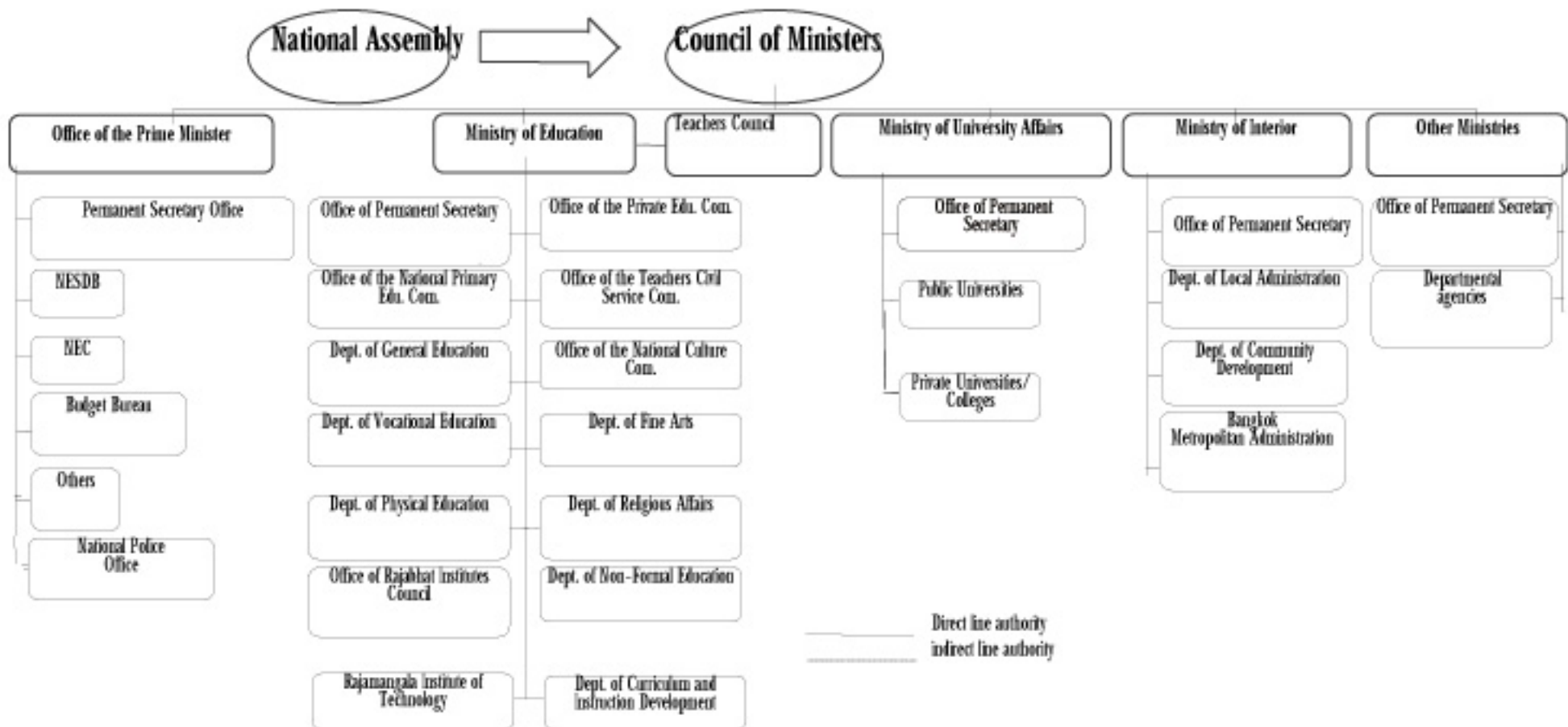
<p>The Office of the National Education Commission (ONEC) is responsible for policy making and planning of education at all levels. Its major task is to formulate the National Scheme of Education, the National Education Development Plan, policy guidelines and recommendations for educational development. It serves as an advisory body to the Prime Minister and the Council of Ministers concerning all matters of education in Thailand. ONEC is also responsible for monitoring and evaluation of the implementation of educational development plans of the agencies involved.</p>

<p>The Budget Bureau is responsible for allocation of the government budget in accordance with the National Economic and Social Development Plan and government policies.</p>
--

● Ministerial or Central Level

At this level, the ministries concerned and the operational implementing organizations may set their ministries' policies which have to be in accordance with the national policy. The major ministries responsible for the management of education are : *Ministry of Education (MOE), Ministry of University Affairs (MUA), and Ministry of Interior (MOI)*, Other ministries that provide education in specialized fields or for specific purposes, both in the formal and non-formal systems, are *Ministry of Defence, Ministry of Public Health, Ministry of Transport and Communications, Ministry of Agriculture and Cooperatives, Ministry of Justice, and Ministry of Labour and Social Welfare (Figure 3.1)*.

Figure 3.1 Educational Administration at the Central Level



Box 3.2 : The Three Main Ministries Responsible for Provision of Educational Services

1. Ministry of Education (MOE)

The scope of responsibility of the MOE covers a wide range of work dealing with educational, religious and cultural affairs. It is composed of 14 departments/offices responsible for educational policies and plans as well as provision and monitoring of educational services.

1) Office of the Permanent Secretary of Education : To be responsible for the policy and plan formulation, supervision and monitoring as well as other tasks of the Ministry.

2) Office of the National Primary Education Commission (ONPEC) : To take responsibility of pre-primary education, primary education, and secondary education provided in primary schools for the expansion of educational opportunities.

3) Department of General Education : To provide secondary education including special and welfare education as well as some vocational education programmes.

4) Department of Non-Formal Education (DNFE) : To take charge of non-formal education services as well as informal education.

5) Department of Vocational Education (DOVE) : To provide vocational education at certificate, diploma, and higher diploma levels as well as vocational training.

6) Office of the Private Education Commission (OPEC) : To oversee private schools from the pre-primary level up to the technical education level, including private special, welfare and non-formal education, as well as to supervise and mobilize financial, staffing, technical and material support to these schools.

7) Rajamangala Institute of Technology : To provide technological education at three levels : Certificate, Diploma and Bachelor's degree.

8) Office of Rajabhat Institute Council : To oversee 36 Rajabhat Institutes (former teachers colleges) responsible for providing higher education and production of teachers in 3 areas : education, science and liberal arts.

9) Department of Physical Education : To train physical education teachers at primary and secondary school levels and run sport schools; to offer bachelor's degree in sport science and health promotion; and to provide in-service training in physical education, health education including recreation for personnel of various departments.

10) Department of Religious Affairs : To uphold and promote Buddhism; to give support and patronage to all religious organizations in Thailand; and to provide ethical and religious education as well as to promote ethical standards :

11) Department of Fine Arts : To preserve, promote, and disseminate national arts and culture, including fine arts, literature, art education, archaeological and historical research, archives, and the maintenance of historical monuments, objects of art and antiquities.

12) Office of the National Culture Commission : To preserve Thai heritage in arts and culture as well as to promote cultural exchange with other countries and non-governmental agencies.

13) Department of Curriculum and Instruction Development : To take charge of curriculum development; preparation of textbooks; educational guidance, assessment and testing; and educational research.

14) Office of the Teachers Civil Service Commission (OTCSC) : To undertake the personnel administration of teachers and educational personnel.

2. Ministry of University Affairs (MUA)

The major role of the MUA is to supervise and coordinate public and private higher education institutions with the exception of some specialized professional training which falls under the jurisdiction of other ministries. It is also responsible for formulating educational policy within the framework of the national education development plan. Other tasks include standardization of curricula, personnel management and recommending areas for budget allocations.

3. Ministry of Interior (MOI)

The Department of Local Administration under the MOI is entrusted with the tasks of administering and managing primary education in the municipality of each province through the Bureau of Local Education Administration. In Bangkok Metropolitan Areas, the management of local education is under the responsibility of the Bangkok Metropolitan Administration (BMA). Besides, some departments of the MOI are responsible for the management of education in specialized fields.

Coordination at a Central or National Level

The formal coordination of educational units at a central or national level is through the committees with representatives from agencies involved as members. An example can be seen in the composition of the *National Education Commission* in Box 3.3.

Box 3.3 : Composition of the National Education Commission (NEC)	
• Prime Minister or Deputy PM designated by the PM	Chairman
• Minister of the PM's Office designated by the PM	Vice-Chairman
• Minister of Education	Member
• Minister of University Affairs	Member
• Permanent Secretary, Office of the Prime Minister	Member
• Permanent Secretary for Defence	Member
• Permanent Secretary for Interior	Member
• Permanent Secretary for Science, Technology and Environment	Member
• Permanent Secretary for Education	Member
• Permanent Secretary for Public Health	Member
• Permanent Secretary for University Affairs	Member
• Director of the Budget Bureau	Member
• Secretary-General of the National Economic and Social Development Board	Member
• 12 Qualified members appointed by the Council of Ministers (at least 5 from private organizations)	Member
• Secretary-General of NEC	Member and Secretary
• Deputy Secretary-General designated by the Secretary-General of NEC	Assistant Secretary

B. Administration and Planning at Regional and Provincial Levels

At regional level, there is no administrative authority for education. However, in order to lighten the burden of the *MOE* at the central level, the country is divided into 12 educational regions. In each region, which consists of 4-8 provinces, there is a *Bureau of Regional Education, Religion and Culture Development* to oversee academic matters such as quality of education, provision of in-service training to teachers, monitoring and evaluation of educational projects as well as providing advice on educational policy and related matters to education officers in the region. The Regional Bureaus are directly under the control of the *Office of the Permanent Secretary for Education*.

At provincial level, the administration of education can be classified into 2 types :

❶ *Delegation of authority from the MOE to the Provincial Education Superintendent Offices and the District Education Offices* which are under the Office of the Permanent Secretary. These offices take charge of private education and all matters relating to religion and culture in the provinces. The *Provincial Education Superintendent* reports to the *Provincial Governor* and the *District Education Officer* reports to the *District Officer*.

❷ *Educational agencies situated in the provinces* which report directly to the central departments under the *MOE*.

Recently, there has been a tendency for each department in the *MOE* to set up its own coordinating offices at provincial and even at district levels as shown on Figure 3.2.

Coordination at Provincial Level

At provincial level, the *Committee on Education, Religion and Culture* has been set up in each province chaired by the *Governor*, with the *Provincial Education Superintendent* as Secretary of the Committee. Other members are the representatives from various departments within the province and 5 scholars. This committee is responsible for the approval of educational development plans at provincial level in line with the *MOE's* plan, preparation of annual budget proposals for the allocation of funds, coordination of common utilization of resources including monitoring and evaluation of provincial plans/projects.

C. Educational Administration at the Local Level

The local authorities responsible for the provision of education in their own jurisdiction are the *Bangkok Metropolitan Administration (BMA)* and the municipalities including Pattaya City, with financial support from, and under the supervision of, the *MOI* (Figure 3.3).

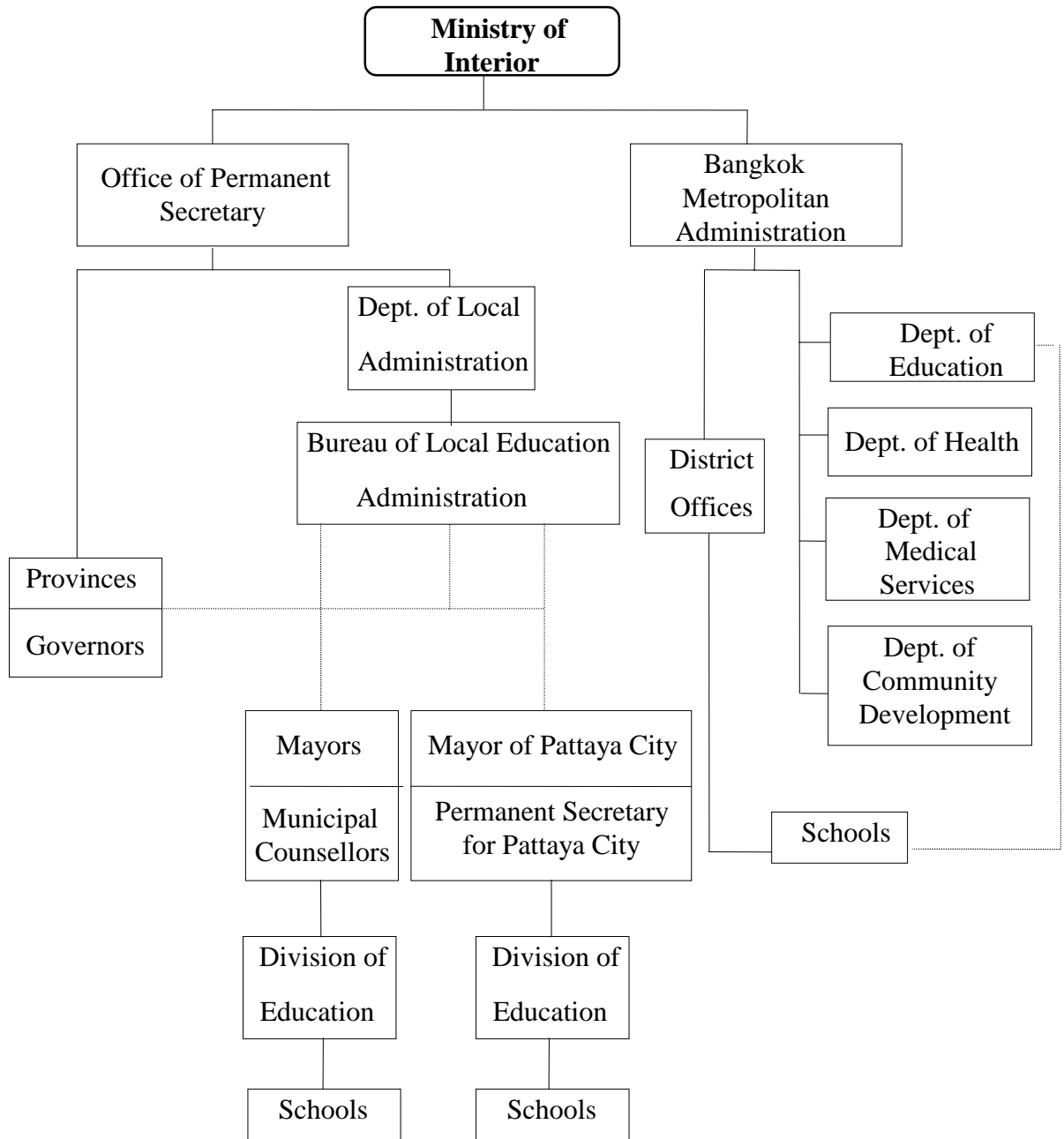
Bangkok Metropolitan Administration (BMA)

The *BMA* is responsible for the provision of local education at several levels and in various types. Apart from providing primary education, it also provides pre-primary education, higher education and non-formal education. In addition, some primary schools have also organized classes at secondary school level since 1992 according to the Project on the Expansion of Educational Opportunities.

Bureau of Local Education Administration

The *Bureau of Local Education Administration* is the central unit responsible for local education of the *Department of Local Education, MOI*, while the municipalities are in charge of local educational provision in those areas. The responsibilities of local authorities include the provision of formal, non-formal and informal education.

Figure 3.3 Local Education Administration



————— direct line of authority
 indirect line of authority

3.2 Educational Personnel Administration

Educational Personnel Administration in *Thailand* involves various agencies at central, regional/provincial, and local levels. It is administered through different commissions, departmental sub-committees, and provincial sub-committees as follows :

A. Personnel Administration at Central Level

The central organizations responsible for educational personnel administration are the *Office of the Civil Service Commission* under the *Office of the Prime Minister*, *Office of the Teachers Civil Service Commission* under the *MOE*, and the *MUA*.

- **Civil Service Commission** takes responsibility of personnel administration for civil servants under the *ONEC*, *Office of the Permanent Secretary for University Affairs*, *Bureau of Local Education Administration*, and those who are non- teachers in the *MOE*.

- **Teachers Civil Service Commission** takes charge of the issuance and amendment of laws, regulations, criteria and procedures for civil service teachers' administration of the *MOE*.

- **University Civil Service Commission** is responsible for personnel administration of civil servants in all public universities, each of which has its own sub-committee for personnel administration (Figure 3.4) Currently, the majority of personnel administration has been delegated to the universities or institutions.

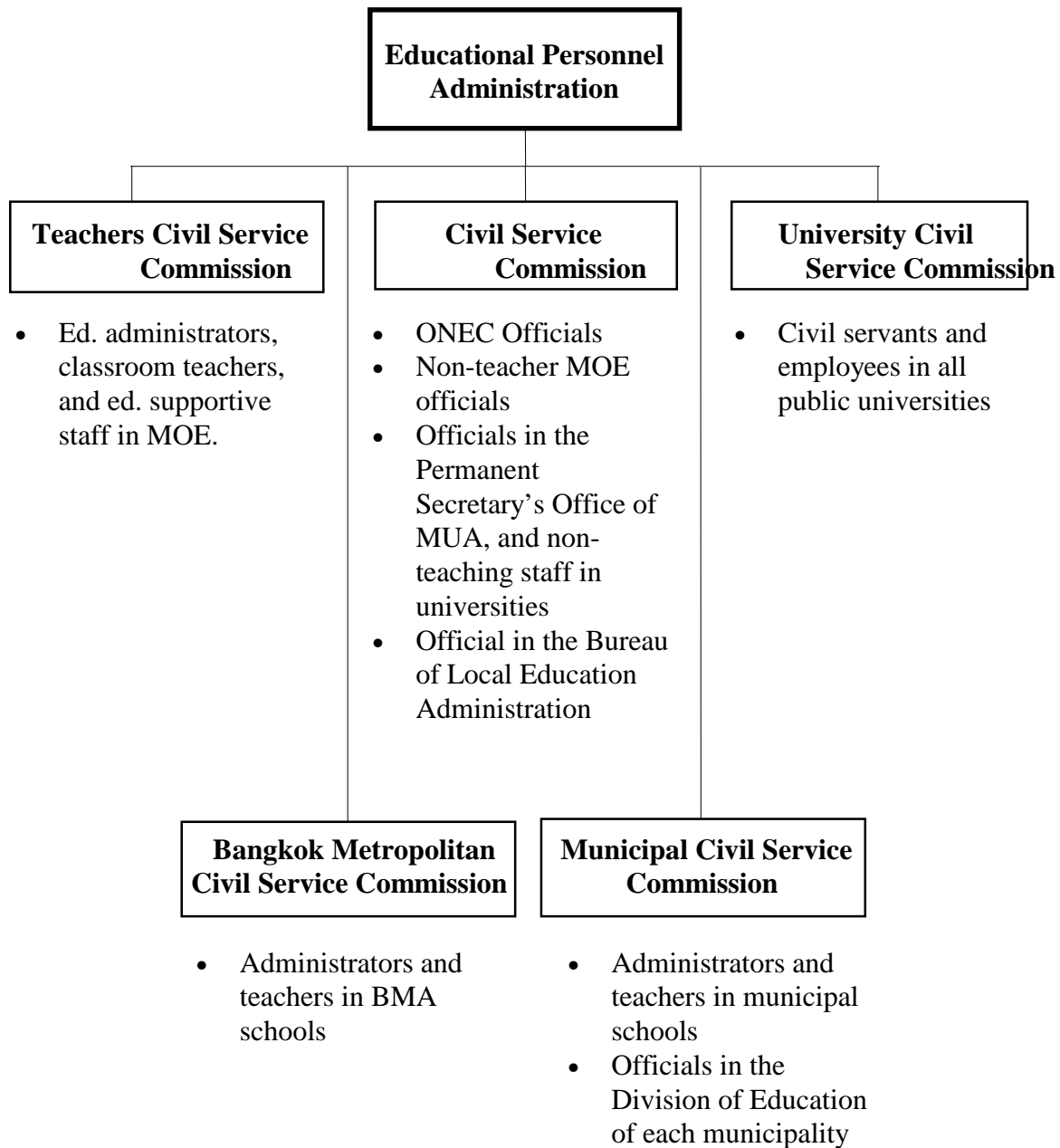
B. Personnel Administration at Regional/Provincial Level

Personnel administration of educational organizations at the regional /provincial level follows the laws and regulations of civil service and teachers civil service.

- **Provincial Civil Service Sub-committee** is authorized to take charge of personnel administration of non-teaching officials with the supervision of the provincial governor.

- **Provincial Teachers Civil Service Sub-committee** is responsible for personnel administration of *MOE* teachers in each province.

Figure 3.4 Structure of Educational Personnel Administration



C. Personnel Administration of Local Organizations

● **Bangkok Metropolitan Civil Service Commission** takes responsibility for administration of administrators and teachers in *BMA* schools with the *Department of Education* as the coordinating agency. *BMA* teachers are under the supervision of the *District Offices* and the *Directors of the District Offices* are delegated to work for the *Commission* on certain issues.

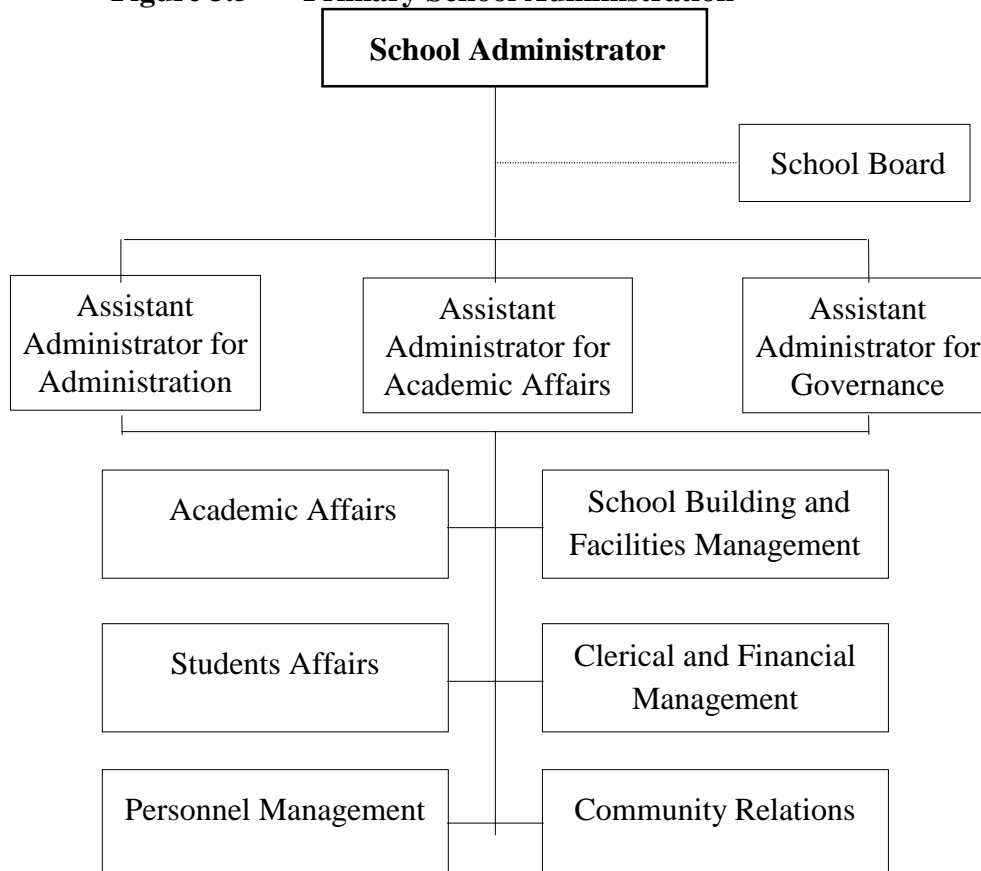
● **Municipal Civil Service Commission** is responsible for personnel administration of municipal officials including administrators and teachers in municipal schools and officials in the *Division of Education* in each municipality. The *Provincial Sub-committee* chaired by the *Provincial Governor* and the *Municipal Sub-committee* chaired by the Mayor is authorized to look after the administration of personnel in provincial and municipal areas.

3.3 Administration at Institutional Level

A. Primary School Administration

School administration is divided into six main tasks namely, academic affairs, clerical and financial management, personnel management, school building and facilities, student affairs and community relations. To control the quality of schools, the administrators have to perform all of these functions putting the greatest emphasis on academic affairs. The other five tasks will supplement and strengthen the academic performance of the schools (Figure 3.5).

Figure 3.5 Primary School Administration



————— direct line of authority
 indirect line of authority

B. Secondary School Administration

The director of a school (for a large school) or the principal of a school, is assisted by 3-4 assistant directors, or assistant principals, in the management and administration of the school. Normally the administrative functions are subdivided into four sections : academic, students governance, services and administration (Figure 3.6).

C. Administration of Higher Education Institutions

Major higher education institutions include *vocational colleges*, *Rajamangala Institute of Technology (RIT)*, *Rajabhat Institutes (RIs)* or former teachers colleges, and universities. Each public university has its own Act empowering the *University Council* to function as the governing body. The Rector or the President operates the university according to the policy laid down by the *University Council* (Figure 3.7). At present, an innovative type of university administration has been introduced as a government-supervised public university. Such a university has its own administrative structure and budgeting system for self-governance and full autonomy. The administration of a vocational college, *RIT*, and each *RI* is similar to that of public universities.

Figure 3.6 Secondary School Administration

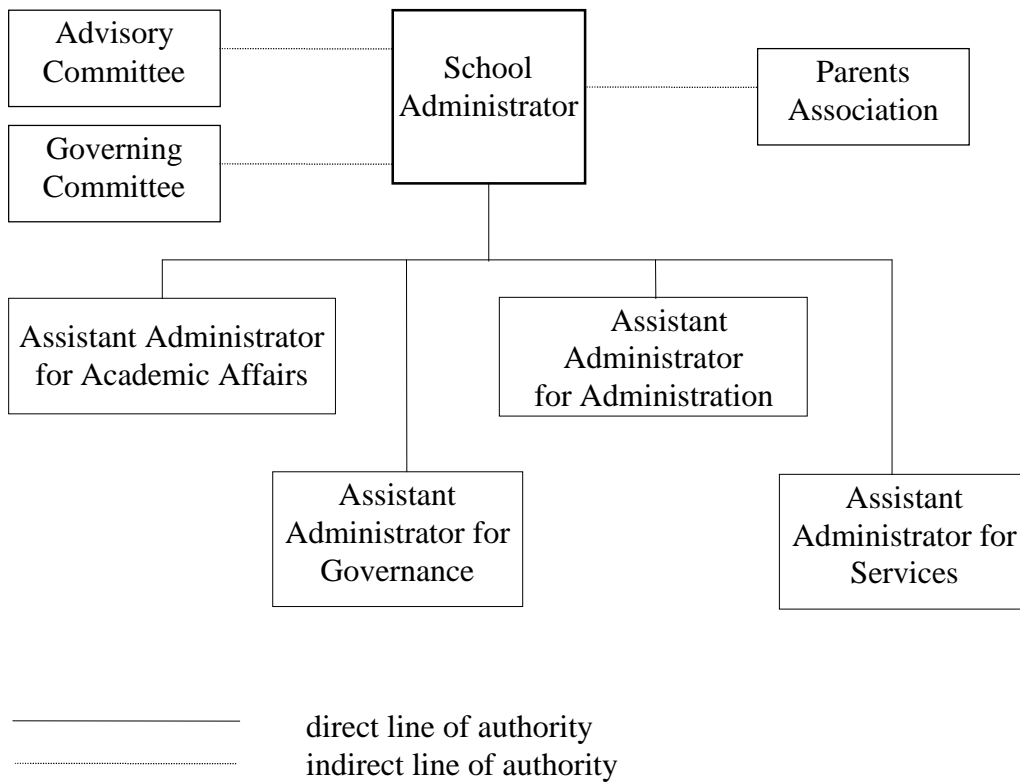
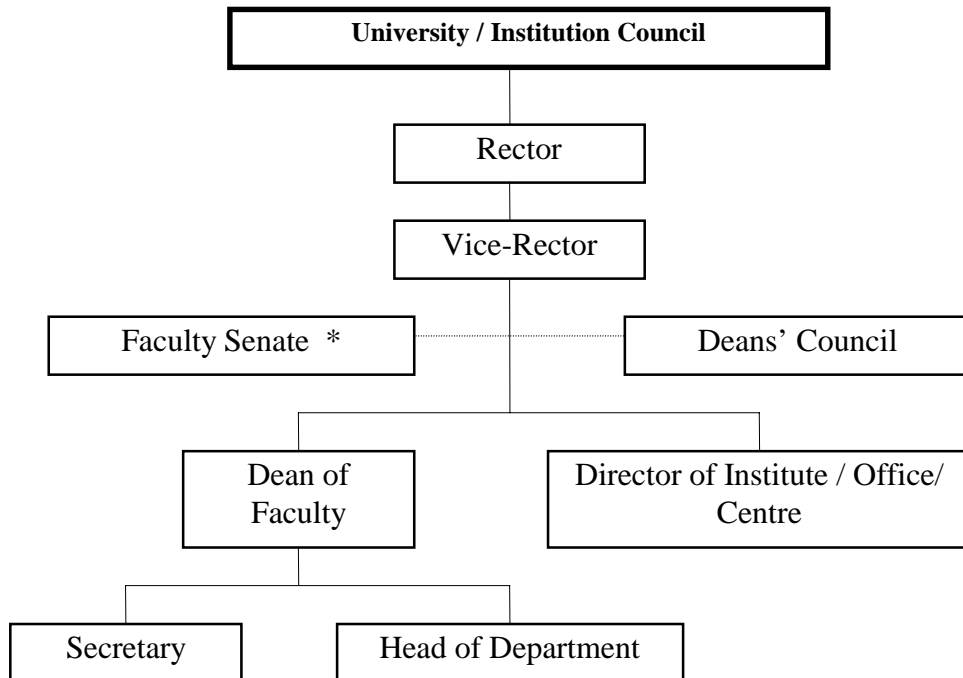


Figure 3.7 Administrative Structure of Public Universities/ Institutions



* Only those universities/institutions allowed to have Faculty Staff Councils in accordance with their Acts.

Source : Office of the National Education Commission.

————— direct line of authority
 indirect line of authority

The present educational administrative system is highly centralized and lacks unity with many overlapping jurisdictions and redundancies. The complexity of the system resulting in many administrative problems is expected to be improved through the reform of educational administrative structure as provided by the National Education Act promulgated in August 1999.