

PART 2

PRESENT STATUS OF EDUCATION

1. Administration and Management

In accordance with the *National Education Act 1999*, the *Ministry of Education, Religion and Culture* will be established by 20 August 2002 and public educational administration and management will be decentralized to local organizations and educational institutions. During this transitional period, the current system of educational administration and management of education in *Thailand* is summarized for background information as follows:

1.1 Administrative Structure

The responsibility for present educational administration and management in *Thailand* is under the mandate of four main ministries : *Office of the Prime Minister*, *Ministry of Education (MOE)*, *Ministry of University Affairs (MUA)* and *Ministry of Interior (MOI)*.

A. At the Central or National Level

Educational administration and planning at the central or national level can be divided into two sub-levels: national policy and planning level and ministerial or central level.

● National Policy and Planning Levels

The government organizations concerned with educational policy and planning are *Office of the National Economic and Social Development Board (ONESDB)*, *Office of the National Education Commission (ONEC)*, and *Budget Bureau*. They are all under the *Office of the Prime Minister*, a ministerial organization.

● Ministerial or Central Level

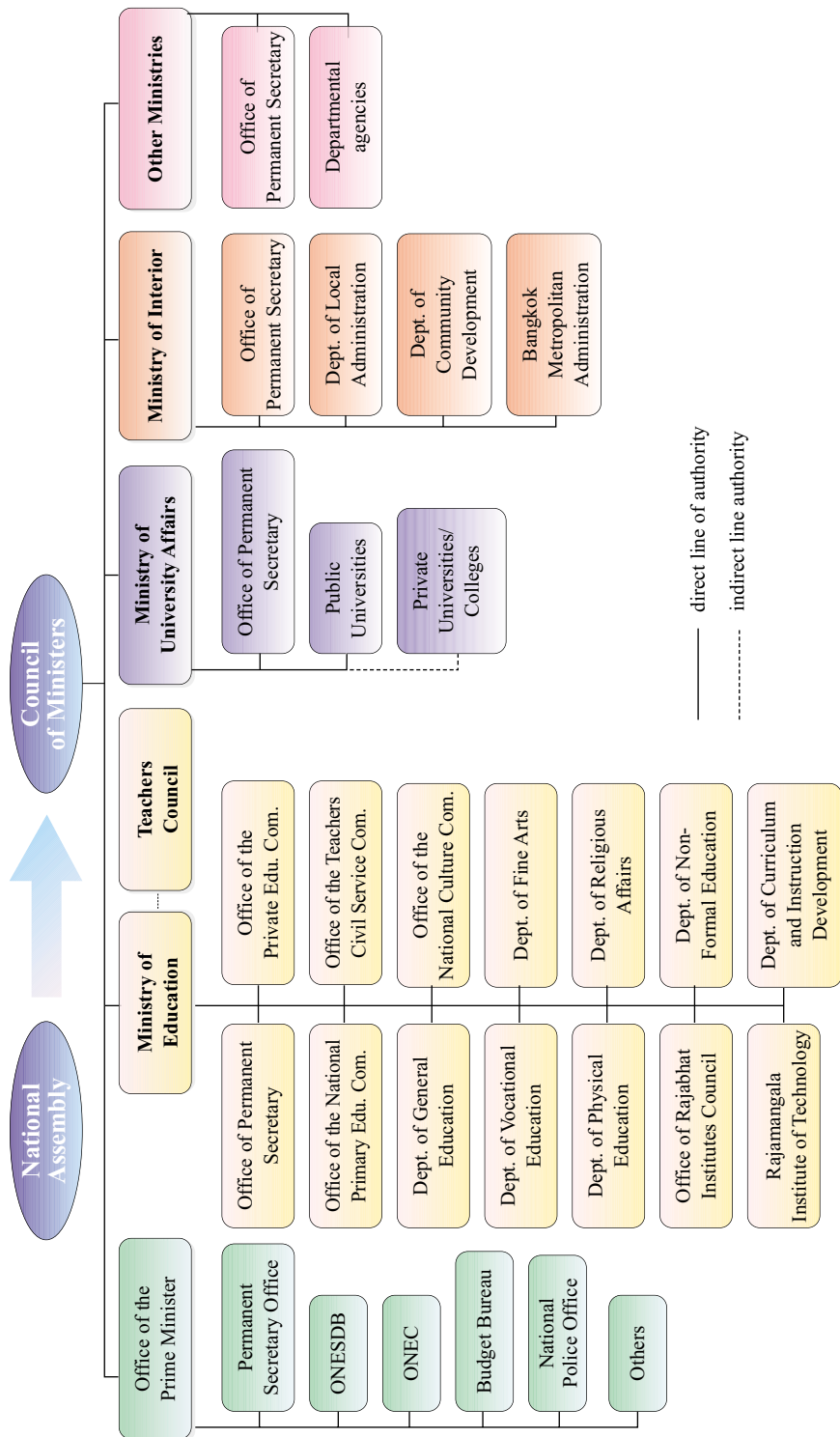
At this level, the ministries concerned and the operational implementing organizations may set their ministries' policies which have to be in accordance with national policy. The major ministries responsible for the management of education are the *MOE*, *MUA* and *MOI*.

In addition, other ministries also take charge of the management of education in specialized fields or for specific purposes:

Ministry of Defence, *Ministry of Public Health*, *Ministry of Transport and Communications*, *Ministry of Agriculture and Cooperatives*, *Ministry of Justice*, *Ministry of Labour and Social Welfare*, and *National Police Office under the Prime Minister's Office* (Figure 5).



Figure 5 Educational Administration at the Central Level



B. At Regional and Provincial Levels

At regional level, the country is divided into 12 educational regions. In each region, there is a Bureau of Regional Education, Religion and Culture Development under the Office of the Permanent Secretary for Education to oversee academic matters.

At provincial level, the administration of education can be classified into 2 types :

- Delegation of authority from the *MOE* to the *Provincial Education Superintendent Offices* and the *District Education Offices* under the *Office of the Permanent Secretary*.
- Educational agencies situated in the provinces which report directly to the central departments.

C. At Local Level

The local authorities responsible for the provision of education in their own jurisdiction are the *Bangkok Metropolitan Administration (BMA)* and the municipalities including *Pattaya City*, with financial support from, and under the supervision of, the *MOI*.

- **Bangkok Metropolitan Administration (BMA)**

The BMA is responsible for the provision of local education at several levels and in various types. Apart from providing primary education, it also provides pre-primary education, lower secondary education, higher education and non-formal education.

- **Bureau of Local Education Administration**

The Bureau of Local Education Administration is the central unit responsible for local education of the Department of Local Education, *MOI*, while the municipalities are in charge of local educational provision in those areas.



D. At Institutional Level

● Primary School Administration

School administration is divided into six main areas namely, academic affairs, clerical and financial management, personnel management, school building and facilities, student affairs and community relations. To control the quality of schools, the administrators have to perform all of these functions putting the greatest emphasis on academic affairs. The other five areas will supplement and strengthen the academic performance of the schools.

● Secondary School Administration

The director of a school (for a large school) or the principal of a school, is assisted by 3-4 assistant directors, or assistant principals, in the management and administration of the school. Normally the administrative functions are subdivided into four sections : academic, students governance, services and administration.

● Administration of Higher Education Institutions

Each public university has its own Act empowering the *University Council* to function as the governing body. The Rector or the President operates the university according to the policy laid down by the *University Council*. At present, an innovative type of university administration has been introduced as a government-supervised public university. Such a university has its own administrative structure and budgeting system for self-governance and full autonomy. The administration of a vocational college, *RIT*, and each *RI* is similar to that of public universities.

1.2 Educational Personnel Administration

Present educational personnel administration in *Thailand* involves various agencies at central, regional/ provincial, and local levels.



(1) Personnel Administration at Central Level

- **Civil Service Commission** takes responsibility of personnel administration for civil servants under the *ONEC, Office of the Permanent Secretary for University Affairs, Bureau of Local Education Administration*, and those who are non-teachers in the *MOE*.

- **Teachers Civil Service Commission** takes charge of the issuance and amendment of laws, regulations, criteria and procedures for civil service teachers' administration of the *MOE*.

- **University Civil Service Commission** is responsible for personnel administration of civil servants in all public universities. Currently, the majority of personnel administration has been delegated to the universities or institutions.

(2) Personnel Administration at Regional/Provincial Level

- Provincial Civil Service Sub-committee is authorized to take charge of personnel administration of non-teaching officials with the supervision of the provincial governor.

- Provincial Teachers Civil Service Sub-committee is responsible for personnel administration of *MOE* teachers in each province.



Choosri Paipibut, 1999 Master teacher

(3) Personnel Administration of Local Organizations

- **Bangkok Metropolitan Civil Service Commission** takes responsibility for the administration of administrators and teachers in *BMA* schools.

- **Municipal Civil Service Commission** is responsible for personnel administration of municipal

officials including administrators and teachers in municipal schools and officials in the *Division of Education* in each municipality.

2. Education System and Learning Process

Educational provision is currently based on the principle of lifelong learning with 3 types of education : formal, non-formal, and informal. In this chapter, educational systems and learning processes will be presented in terms of the organization of formal education and the promotion of lifelong learning.

2.1 Organization of Formal Education

According to the National Education Act 1999, formal education is divided into 2 levels : basic education and higher education.

1. Basic Education

Basic education comprises pre-primary education, primary education, and secondary education.

A. Pre-primary Education

Pre-primary education is organized by various agencies, both public and private, for 3-5 year old children. The courses offered can be classified into 3 types : child development centres, kindergartens and pre-school classes. Normally, the provision of learning experience is organized for the physical, emotional, social and intellectual development of children through everyday activities.

B. Primary Education

Six-year primary education, which is now compulsory, is provided to 6-11 year old children. Public primary schools are mainly organized by the *MOE* through the *Office of the National*

